

Activity Type

Speaking Activity: unscrambling, asking and answering questions from prompts, matching (pair work)

Focus

Getting around by bus

Aim

To become familiar with questions related to taking the bus.

Preparation

Make one copy of the two worksheets for each pair of students.

Level

Intermediate (B1)

Time

25 minutes

Introduction

This bus travel activity help students become familiar with questions related to taking the bus.

Procedure

Divide the students into two groups (A and B). Give each student a corresponding worksheet.

Students start by unscrambling words to form bus travel questions.

When the students have finished, check the questions with each group.

Exercise A - Answer key

1. Where is the nearest bus stop?
2. What is the fare for one adult?
3. Can I have change for \$10?
4. How much is a student bus pass?
5. What time is the next bus?
6. Can I have a transfer ticket?
7. Is there a weekend bus pass?
8. Do I pay when I get on or get off?
9. Can you stop at Park Street, please?
10. Which bus goes to the aquarium?
11. Do I have to transfer to another bus?
12. Does this bus stop at Central Station?
13. Is there a discount for students?
14. How many more stops until we get off?
15. Where should I get off for City Stadium?
16. How long will it take to get downtown?

Next, each student pairs up with someone from the other group.

Students then take it in turns to read their bus travel questions and respond to their partner's questions with an appropriate answer from their worksheet, writing the corresponding question number next to the reply.

When the students have finished, check the answers with the class.

Exercise B - Answer key

1. k
2. b
3. n
4. a
5. i
6. g
7. l
8. h
9. p
10. c
11. o
12. e
13. j
14. d
15. m
16. f

As an extension, students can use the questions to create a bus travel dialogue that they present to the class.

Student A

A. Unscramble the words to form bus travel questions.

1. the nearest / stop / where / is / bus?

.....

3. change / I / for \$10 / have / can?

.....

5. bus / time / what / the next / is?

.....

7. there / bus / a weekend / is / pass?

.....

9. stop / you / at Park Street / can / please?

.....

11. transfer / to another bus / I / do / have to?

.....

13. students / there / for / is / a discount?

.....

15. should / get off / where / for City Stadium / I?

.....

B. With your partner, take turns reading your bus travel questions and responding to your partner's questions with an appropriate answer below.

..... a. A pass is \$24 per month.

..... b. Adults are \$2.10.

..... c. The 47 and 073 buses both go there.

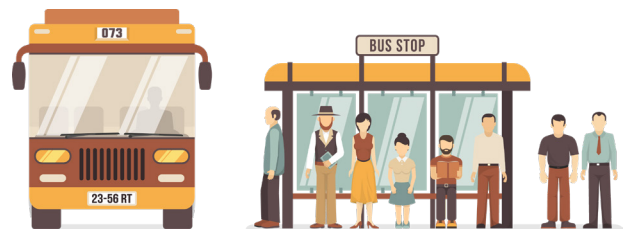
..... d. Two more stops. We're almost there.

..... e. Yes, it does. That's the last stop.

..... f. It'll take about 30 minutes if the traffic is OK.

..... g. Here you go. You have to use it within two hours.

..... h. Please take a ticket when you get on and pay when you get off.



Student B

A. Unscramble the words to form bus travel questions.

2. the fare / is / one adult / for / what?

.....

4. a student / bus pass / much / how / is?

.....

6. a transfer / have / I / ticket / can?

.....

8. I pay / get on / do / or get off / when I?

.....

10. bus / the aquarium / goes / to / which?

.....

12. at / this bus / does / Central Station / stop?

.....

14. many / until / we get off / how / more stops?

.....

16. will it take / downtown / long / how / to get?

.....

B. With your partner, take turns reading your bus travel questions and responding to your partner's questions with an appropriate answer below.

..... i. It leaves at 11:15.

..... j. Yes, students are half price.

..... k. It's just around the corner.

..... l. Yes, there is. It costs \$6.

..... m. Get off at Elm Street. It's close to the stadium.

..... n. Yes, you can use the change machine.

..... o. Yes, please change to the 101 bus at 3rd street.

..... p. Yes, I will stop there an make an announcement.

