

## Activity Type

Speaking Activity:  
forming, asking and  
answering questions,  
controlled and freer  
practice (group work)

## Focus

Time expressions

Yes/no questions and  
short answers

## Aim

To ask and answer  
questions that use past,  
present and future time  
expressions.

## Preparation

Make one copy of the  
cards for every  
12 students and cut as  
indicated.

## Level

Pre-intermediate (A2)

## Time

20 minutes

## Introduction

In this time expressions activity, students conduct a survey where they ask and answer questions that use past, present and future time expressions.

## Procedure

Divide the students into groups of 12 or less.

Give each student a card.

Tell the students that they are going to practice various time expressions by conducting a survey.

Each student then prepares the yes/no question they need to ask to find out the information on their card, e.g. 'Did you check your email this morning?'

Afterwards, review the questions as a class.

Students then go around their group, asking and answering the questions.

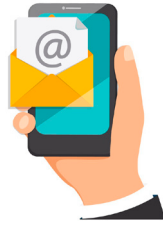
Students note the number of people who answer yes or no to their question on the back of the card.

Finally, each student reports back their findings to the class.

For example, a student with Card A might say, "Ten people in the class checked their email this morning."

Card A

..... people in the class checked their email this morning.



Card B

..... people in the class are going to have dinner at a restaurant tomorrow.



Card C

..... people in the class took a nap yesterday.



Card D

..... people in the class are going to watch TV this evening.



Card E

..... people in the class think they will get home by five o'clock today.



Card F

..... people in the class usually get up early these days.



Card G

..... people in the class use social media every day.



Card H

..... people in the class start work or school at nine o'clock in the morning.



Card I

..... people in the class usually go shopping at the weekend.



Card J

..... people in the class went to bed very late one day last week.



Card K

..... people in the class have coffee with their breakfast every morning.



Card L

..... people in the class are going to play a sport in the near future.

