

Activity Type

Vocabulary and Speaking
Activity: matching, gap-fill (pair work)

Focus

Valentine's Day
vocabulary

Aim

To match Valentine's Day words to definitions and then race to complete sentences with the vocabulary.

Preparation

Make one copy of the two worksheets for each pair of students.

Level

Intermediate (B1)

Time

30 minutes

Introduction

In this Valentine's Day activity, students match Valentine's Day words to definitions and then race to complete sentences with the vocabulary.

Procedure

Divide the students into two groups (A and B). Give each student a corresponding worksheet.

The students start by matching 10 Valentine's Day words to their correct definitions. When the students have finished, check the answers with each group.

Exercise A - Answer key

Student A

- h
- e
- a
- i
- j
- b
- c
- f
- d
- g

Student B

- e
- j
- f
- h
- i
- a
- d
- g
- b
- c

Next, students join up with a partner from the other group.

Tell the students not to show their worksheet to their partner.

Explain that the students are now going to race to complete the sentences on their worksheet with the Valentine's Day vocabulary from their partner's sheet.

Students then take it in turns to read each sentence to their partner using the word 'blank' for the missing word.

Their partner chooses a Valentine's Day word from their worksheet to complete the sentence and says it aloud. If the pair agrees the word is correct, the student writes it in the sentence.

When both students have completed all their sentences, they shout 'Finished!' You then checked their answers. The first pair to complete both sets of sentences correctly wins.

Exercise B - Answer key

Student A

- card
- flowers
- candy
- February
- hug
- date
- pink
- send
- present
- celebrate

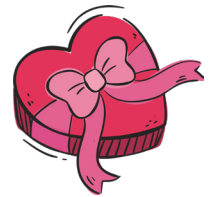
Student B

- red
- Cupid
- envelope
- balloons
- romantic
- couple
- heart
- love
- kiss
- chocolates

Student A

A. Match the Valentine's Day words to their correct definitions.

- | | |
|---|---------------|
| 1. Something you put a letter in. | a. couple |
| 2. A strong feeling of attraction. | b. romantic |
| 3. Two people in a relationship. | c. balloons |
| 4. The colour associated with Valentine's Day. | d. kiss |
| 5. The God of love. | e. love |
| 6. Connected to love or a close loving relationship. | f. chocolates |
| 7. Objects filled with air often used at parties. | g. heart |
| 8. Sweet brown things that come in a box. | h. envelope |
| 9. Something you give someone with your lips. | i. red |
| 10. The symbol of love and an organ in your body. | j. Cupid |



B. Read each sentence below to your partner using the word 'blank' for the missing word. Your partner chooses a Valentine's Day word from their worksheet to complete the sentence. If you both agree the word is correct, write it in the sentence.

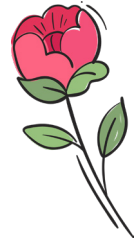
1. I opened the envelope and took out the that was inside.
2. Last Valentine's Day, I received a bunch of beautiful smelling
3. The he sent me was sweet and delicious.
4. is my favourite month of the year.
5. I gave her a because I was so happy to see her.
6. Enzo's Restaurant is the perfect place to go on a Valentine's Day
7. There were and red hearts on the back of the envelope.
8. I my boyfriend a card every Valentine's Day.
9. After reading the card, I opened the
10. I am single, so I won't Valentine's Day this year.

When you have both completed all your sentences, shout 'Finished!' and have your answers checked by your teacher. The first pair to complete both sets of sentences correctly wins.

Student B

A. Match the Valentine's Day words to their correct definitions.

- | | |
|---|--------------|
| 1. Food made from sugar. | a. send |
| 2. Something you give someone. | b. February |
| 3. A colour associated with Valentine's Day. | c. card |
| 4. When you put your arms around someone you love. | d. celebrate |
| 5. Colourful things that come from plants. | e. candy |
| 6. You do this with a card or letter. | f. pink |
| 7. To do something fun to mark a special event. | g. date |
| 8. A meeting with someone you like very much. | h. hug |
| 9. The month when Valentine's Day is celebrated. | i. flowers |
| 10. Something you send someone on Valentine's Day. | j. present |



B. Read each sentence below to your partner using the word 'blank' for the missing word. Your partner chooses a Valentine's Day word from their worksheet to complete the sentence. If you both agree the word is correct, write it in the sentence.

1. I drew lots of hearts inside his card.
2. There was a picture of, the god of love, on the front of his card.
3. I put the Valentine's card in an and wrote her address on it.
4. For our Valentine's Day Party, we decorated the room with pink and red
5. Valentine's Day is the most time of the year.
6. They are a happy They love each other a lot.
7. She sent me a card with a big red on it.
8. I him very much. I hope we will get married one day.
9. He told me he loved me and gave me a
10. On Valentine's Day, I received a card and some delicious

When you have both completed all your sentences, shout 'Finished!' and have your answers checked by your teacher. The first pair to complete both sets of sentences correctly wins.